

SGT 建筑系统

SGT Building Systems



德国矩迪建筑系统有限公司
上海矩迪建筑装饰工程有限公司
Shanghai GT Building Systems Co. Ltd.
GT-Roofing PTE Ltd., Singapore



信譽和品質是鋪就品牌的基石！

Credit and quality pave the ground of a famed brand!

目录	Index	
公司简介	Company Profile	1
产品介绍	Products.....	2
GT-DS 双锁扣立边金属屋面系统	GT Double Locked Seam Roofing System.....	2
GT-SS 直立锁边金属屋面系统	GT Standing Seam Roofing System.....	4
GT-SP 铝合金波纹板墙面系统	GT Sinusoidal Metal Cladding System.....	6
GT 古典扣盖式立边屋面系统	GT Roll Cap Standing Seam Roofing System.	8
GT 锁扣式墙面系统	GT Inter-locked Cladding System.....	11
GT-19-808 型金属墙面系统	GT19-808 Metal Cladding System.....	12
GT 金属瓦片系统	GT Metal Tile System.....	14
GT 金属吊顶系统	GT Metal Ceiling System.....	15
GT-金属天沟系统	GT Gutter System.....	16
GT 太阳能系统	GT Solar System	17
材料简介	Material Option.....	18
板型图	Profiles	19
生产设施配套	Machines and Facilities.....	21
工程实例	Referenced Projects.....	22



基于德国专业技术，凭借卓越的品质和可靠的信誉，GT 建筑系统已跻身于全球金属屋面和建筑外立面领域的知名品牌之列。

多年以来，我们一直致力于建筑金属屋面和外立面系统的研发，为客户推出了完善、先进的建筑系统方案。拥有 GT 直立锁边系统，GT 双锁扣立边系统，GT 金属波纹板外立面系统，GT 金属吊顶系统，SGT 总能在建筑美学、建筑功能及结构性能等方面满足建筑师和业主要求。同时，我们还可为客户提供完善的定制服务，使建筑师的各种观念设计得以完美实现。

所有的观念设计和施工图深化设计，均由具有丰富经验的德国专家担当。工程现场的组织 and 施工由海外专家和技师监督，确保工程施工与设计理念及施工图的一致性。

作为一个生产型企业，SGT 注册资本达 2500 万人民币，在上海市设有加工厂，配备先进的德国生产线，月产量 10 万 m² 以上。基于德国技术、周到服务和可靠的质量保证，SGT 期待为您提供创新、可靠、经济的解决方案。

Based on German technology, GT building systems have been recognized as a famed and reliable brand of metal roofing and façade systems worldwide.

For years, we have been dedicated in the research and development of metal roofing and metal profile façade systems, rewarded with complete and state-of-the-art building solutions for our customers. With GT standing system and GT double-locked standing seam system for roofing application, GT corrugated profile and GT metal ceiling system, SGT is always accomplished in meeting the aesthetical, functional and structural requirements of the architects and the owners. Other systems are available to realize various conceptual designs.

All conceptual designs and shop drawing developments are carried out by experienced German experts. Organization and execution of the projects are also conducted under control of overseas experts and craftsmen to guarantee consistency to the design intent and shop drawings.

GT establishes a production base in Shanghai Economic Development Zone, equipped with imported production lines from Germany, with monthly capacity of 100,000 m². Based on German technology, thoughtful service and reliable warranty, SGT is looking forward to extending innovative, reliable, and cost-saving solutions to clients worldwide.

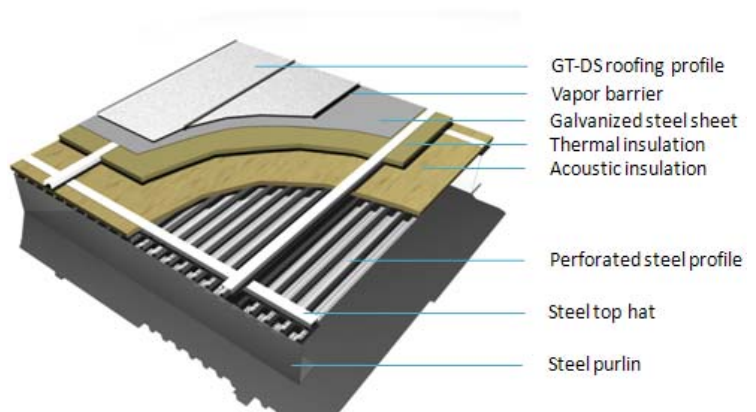
GT-DS 双锁扣立边咬合屋面系统简介 (GT-DS Double Locked Seam Roofing System)

双锁扣立边咬合屋面系统通常适用于弧度半径比较小，结构比较复杂的球形、弧形和特异造型屋面，如体育场馆，高级会所，商务中心，高级别墅等，可完美实现建筑师对各种特异建筑造型的概念设计。系统充分考虑美学、结构、风压、位移、保温、防水等因素的合理设计及施工，确保完善的系统性能。

Double lock standing seam system is generally applied in spherical, curved, and other special shaped roofing systems, with relatively smaller radius, e.g., stadiums, club house, business centers, high-grade villas, where various design concepts of the architects can be easily realized. The system allows for aesthetics, material, structure, wind-load, thermal movement, thermal insulation, water-tightness, etc., providing a system with complete and integral performance.

系统参数:

1. 材质: 3000 系列铝镁锰合金、钛金属、铜板、不锈钢或定制
2. 板型: 280mm ~ 525mm
3. 立边高度: 25 ~ 38mm
4. 系统自重: 约 20~40kg/m²
5. 檩条间距: 小于 1.5m
6. 坡度: $\geq 7^\circ$ (小于 7° 见技术手册)



System Parameters:

1. Material: 0.7mm~1.0mm aluminium or customized.
2. Width: 280mm ~ 525mm
3. Seam height: 25 ~ 38mm
4. Dead load: appr. 20~40kg/m²
5. Space of C purlin: less than 1.5m
6. Pitch of roof: $\geq 7^\circ$ (< 7° see tech. brochure)



GT-DS 双锁扣立边系统的特性

- 实现建筑师的弧形、球形和双曲面等异型屋面设计观念；
- 立边采用机械咬合，不使用化学胶嵌缝，屋面表面无任何螺钉穿透；
- 暗扣式固定，固定扣件和活动扣件组合，可吸收热胀冷缩，防止板块变形或开裂；
- 满足用户对屋面保温、隔热、隔声等性能的要求；
- 屋脊、天窗、天沟、檐口等关键部位处理灵活，均采用 360 度锁缝，具有整

体防水性能。



Features of Double Locked Seam System

- Realize architect's design intent of spherical, curved, and other special shaped roofing systems;
- Combination of invisible fixed and sliding clips, accommodating movement resulting from thermal movement, thus avoiding cracking or deformation;
- Mechanical seaming, without any application of chemical sealant, avoiding aging and environmental pollution;
- Meet the requirement of thermal insulation and acoustic performance;
- Flexible solutions for ridge, gable, skylight, gutter, eave, etc. by 360 degree locked seam, with perfect water-tight performance.

材料选择

材料采用防腐蚀性能强，使用寿命长的铝镁锰合金、钛金属、铜等材料，系统使用寿命 50~100 年。

Material Options

Materials with excellent anti-corrosion performance and long service life, e.g., pre-painted aluminium, titanium, copper, etc., are recommended for the system to achieve a service life of more than 50 years.

GT-SS65 直立锁边系统 (GT-SS65 Standing Seam System):

直立锁边系统通常适用于弧度半径比较大，屋面相对比较平整的屋面，如飞机场，体育场馆，会展中心，工业厂房等。现场加工，快速精确。系统充分考虑美学、结构、风压、位移、保温、隔热、防水等因素的合理设计及施工，确保完善的系统性能。

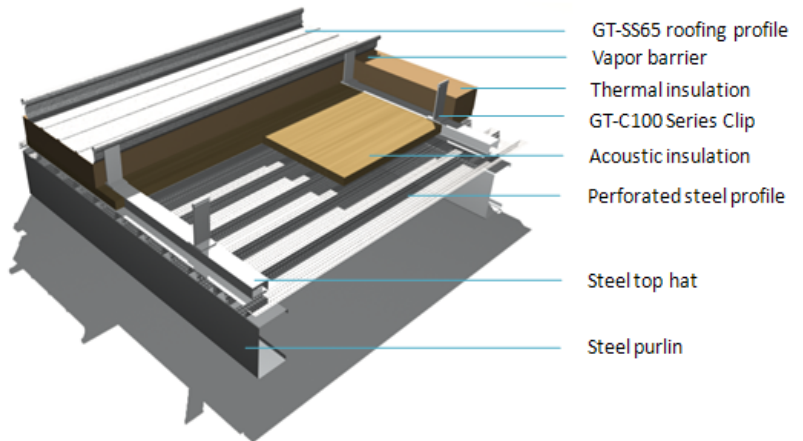
Standing seam system is widely applied in roofing systems of big-radius curve or relatively flat roof, e.g., airport, stadium, exhibition centre, factory, etc., featured by fast site fabrication and easy installation, with special solutions for aesthetics, structure, wind load, movement, thermal insulation, water tightness, etc., to ensure perfect system performance.

System Parameters:

1. Material : 0.7mm~1.0mm 3000 series aluminium or customized.
2. Width: 400mm ~ 600mm
3. Seam height: 65 mm
4. Dead load: appr. 20~40kg/m²
5. Space of C purlin: less than 1.5m
6. Pitch of roof: No limitation
7. Thermal conductivity: $\leq 0.043W$
8. Noise reduction coefficient (NRC): 0.95

系统参数:

1. 材质: 0.7mm~1.0mm 3000 系列铝镁锰合金或定制
2. 板型: 400mm ~ 600mm
3. 立边高度: 65mm
4. 系统自重: 约 20~40kg/m²
5. 檩条间距: 小于 1.5m
6. 坡度: 不限
7. 导热系数: $\leq 0.043W$
8. 平均降噪系数: NRC 0.95

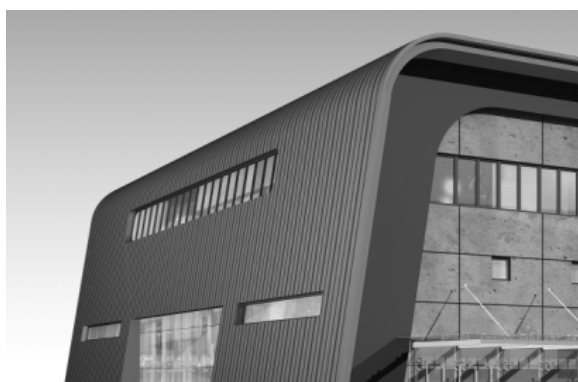


GT-SS65 直立锁边系统的特性

- 立边和接缝采用机械咬合，暗扣式固定，屋面无任何穿孔；
- 通长板块，具有整体防水、排水功能；
- 无须化学胶嵌缝，可免除环境污染和老化问题，延长使用寿命；
- 带绝缘层的固定支座，满足断热冷桥要求；
- 合理的系统配置，满足保温隔热、隔音降噪的建筑功能要求。

材料选择

材料采用防腐蚀性能强，使用寿命长的铝镁锰合金、钛金属等材料，系统使用寿命可达 50 年以上。



Features of the System

- Continuous panel, ensuring excellent waterproof performance;
- Standing seam and interface are mechanically locked, with invisible clip fixing, without any screw punching through the roofing panels;
- No application of chemical sealant, avoiding environmental pollution and aging, thus enjoying longer service life;
- Fixing clips with thermal-break rubber pad;
- Reasonable system design ensures thermal and acoustic insulation.

Options of Materials

Materials with excellent anti-corrosion performance and long service life, e.g., pre-painted aluminium, titanium, etc., are recommended for the system to achieve a service life of more than 50 years

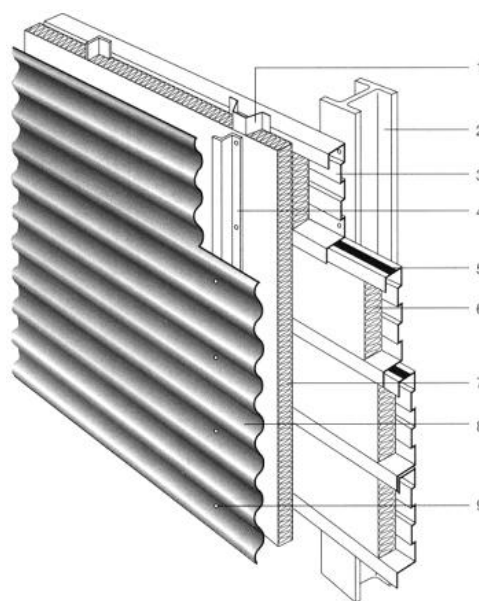
GT-CS 系列铝合金波纹板系统

(GT-CS Corrugated Metal Cladding Sheet)

GT 金属波纹板外立面系统适用于各种建筑物外墙，别具一格的建筑曲线美感，将通风、防水、保温、隔音等建筑功能融为一体。本产品被奔驰 4S 店指定为专用外墙装饰材料。

波纹板外立面系统

1. 底板加强支撑
2. 附属支撑
3. 底板
4. 波纹板附属支撑
5. 隔离片
6. 吸音棉
7. 保温棉
8. 波纹板
9. 紧固件



The convex outline of sinusoidal profile gives unique aesthetic effect to the building. The system has excellent performance of ventilation, water-tightness, thermal and acoustic insulation.



System Structure:

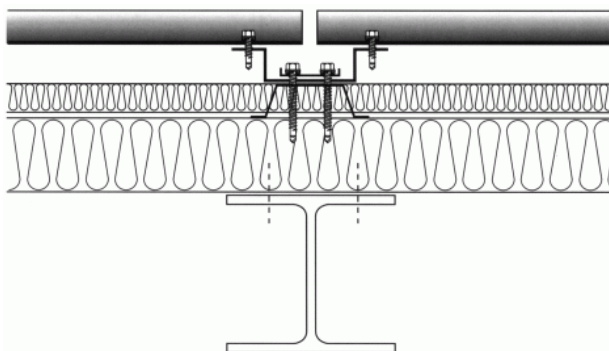
1. Reinforcement for the trays
2. Sub-construction
3. Tray
4. Sub-construction for profile
5. Decoupling
6. Insulation
7. Insulation
8. Sinusoidal profile
9. Fastener

技术参数:

材质: 铝镁锰合金板、钛锌板
规格: 18/76 [波高 18mm, 波距 76mm]
厚度: 0.7~1.2 mm
投影宽度: 988~1180mm
有效覆盖宽度: 988~1000mm

材料选择

材料采用防腐蚀性能强, 使用寿命长的铝镁锰合金、钛合金屋面板, 系统使用寿命可达 50 年以上。



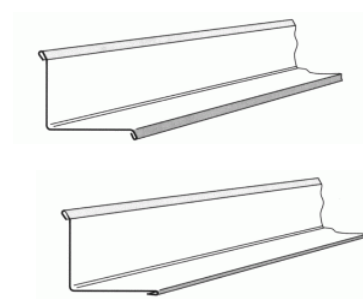
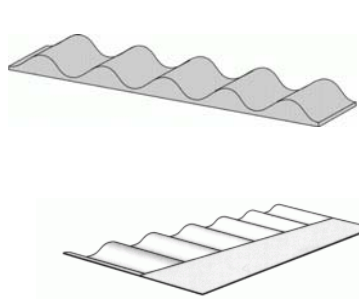
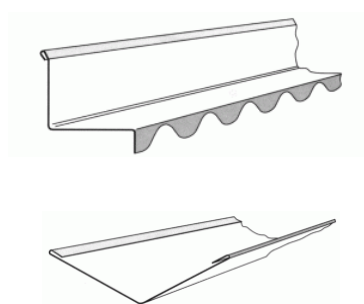
Parameters:

Specification: 18/76 [(H)18mm,(C/C)76mm]
Thickness of material: 0.7~1.2 mm
Width of profile: 988~1180mm
Effective coverage width of profile: 988 ~ 1000mm

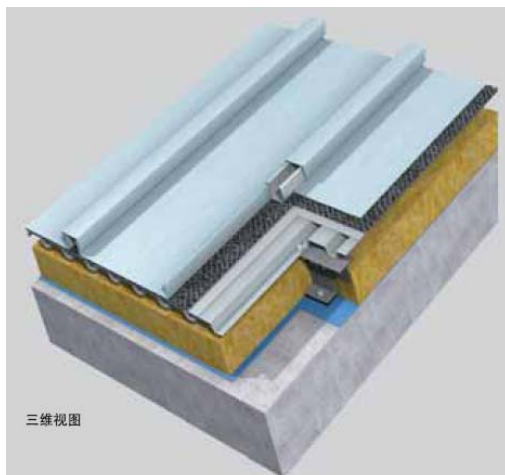
Option of materials:

Materials with excellent anti-corrosion performance and long service life, e.g., pre-painted aluminium, titanium, etc., are recommended.

专用配件(Accessories)



古典扣盖式立边屋面系统 (Roll Cap Standing Seam Roofing System)



Description

The flexible tile reflects the traditional European building style, especially intended for villas, resort villages and various landscape buildings, with good adaptation for flat or two directions roofing,

Parameters:

Seam Height: 50mm

Profile Width: 300~530

Thickness of material: 0.7~0.8 mm

Roof pitch: $>3^{\circ}$

Material Options: Titanium, copper, aluminium alloy

系统描述

本系统以灵活的线条美感体现欧洲古典建筑风格，板型可塑性极强，适用于平屋顶或双曲面，具有抗风压性强，防水性能好的特点，尤其适用于高级别墅，疗养胜地及各种景观性建筑物。

系统参数

立边高度: 50mm

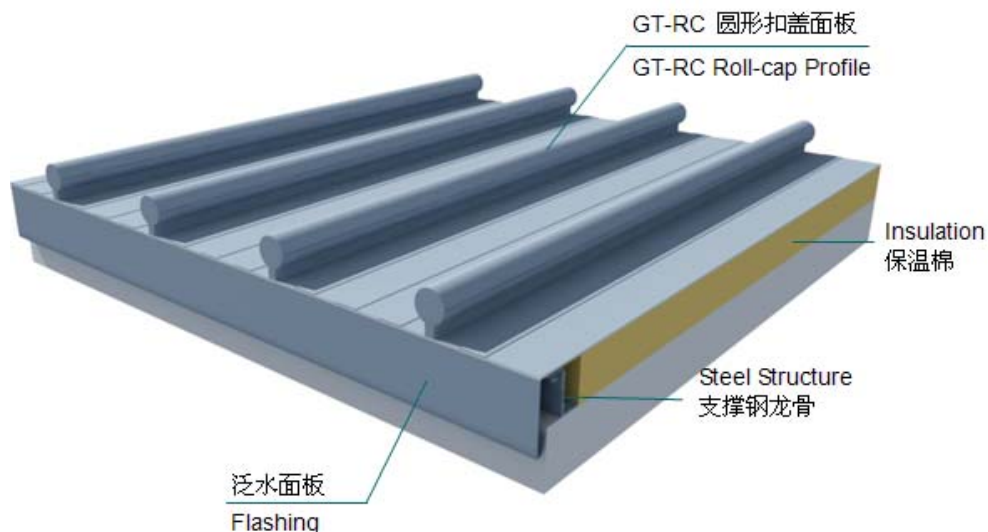
板型宽度: 300~530

板材厚度: 0.7~0.8

适用坡度: $>3^{\circ}$

首选材料: 钛锌板、铜板、铝合金板

GT-RC118-485 圆形古典扣盖式屋面系统 (GT-RC118-485 Roll Cap Roofing System)



系统描述

该系统以古典线条为主要特征,体现中国古典建筑风格,广泛应用于鼓楼、古典楼阁、古塔、教堂、博物院等金属屋面。可选用复古色彩,用铝镁锰、钛锌板、太古铜板等作材料,可实现亘古的主题效果。系统使用寿命可达 100 年以上。

首选材料: 钛锌板、铜板、铝合金板

Description

The system features linear layout and embodiment of traditional China architectural styles, intended for tower, temple, museum and other ancient styles. Aluminium, titanium, copper, etc. can be applied with ancient style color to achieve the design intent with longevity of more than 100 years.

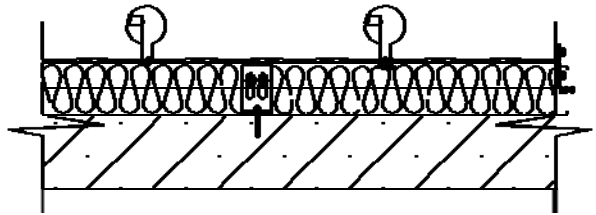
Material Options: Titanium, copper, aluminium alloy

GT-RC118-485 圆形古典扣盖式屋面系统 (GT-RC118-485 Roll Cap Roofing System)

GT-RC118-485 System Parameters

System Parameters

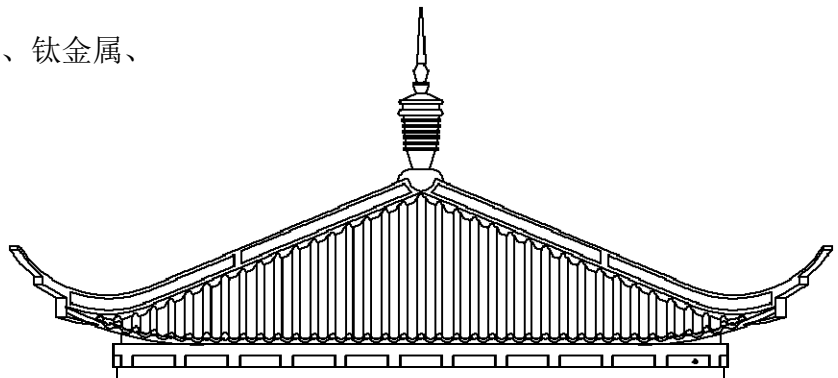
1. Material: 0.7mm~1.0mm aluminium, titanium, or customized.
2. Width: 485mm
3. Seam height: 118mm
4. Dead load: appr. 20~35kg/m²
5. Space of C purlin: less than 1.5m
6. Pitch of roof: $\geq 5^\circ$



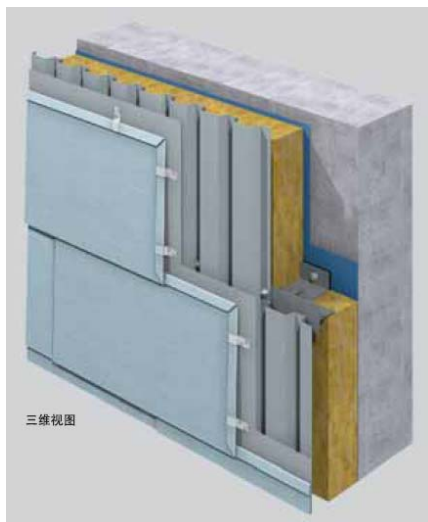
GT-RC圆形古典扣盖系统参数

系统参数

1. 材质: 3000系列铝镁锰合金、钛金属、铜、不锈钢或定制
2. 板型: 485mm
3. 立边高度: 118mm
4. 系统自重: 约20~35kg/m²
5. 檩条间距: 小于1.5m
6. 坡度: $\geq 5^\circ$



GT 锁扣式墙面系统 (Inter-locked Seam Cladding System)



Description

The system features flexible division, linear layout and embodiment of traditional European architectural styles, intended for exhibition centers, museums, libraries, stadiums and villas.

Parameters:

Profile Width: 300~600 mm

Thickness: 0.7~1.2 mm

Pitch: Waterproof layer required

Material: Titanium, copper, aluminium alloy

系统描述

本系统分格灵活，层次感强，体现欧洲建筑风格，板型可塑性极佳，适用于会展中心、博物馆、图书馆、体育场馆、高级别墅等建筑物。

系统参数

板型宽度: 300~600mm

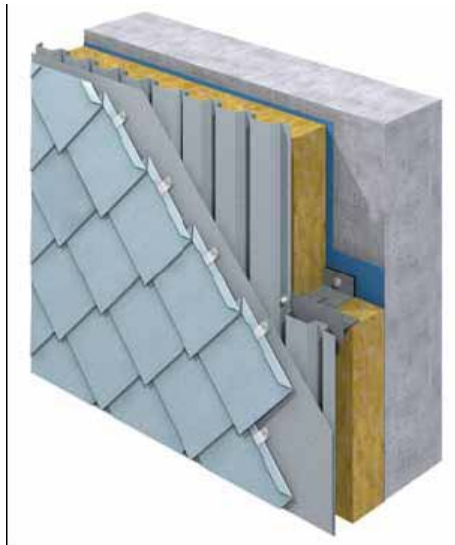
板材厚度: 0.7~1.2mm

适用坡度: 通常需要铺设防水卷材

首选材料: 钛锌板、铜板、铝合金板



菱形瓦片系统 (Diamond Tile System)



Description

The diamond shape represents traditional European architectural styles, intended for various building shapes.

Parameters:

Profile Width: 200mm, 300mm, 400mm

Thickness: 0.7~1.2mm

Pitch: Waterproof layer required

Material: Titanium, copper, aluminium alloy

系统描述

本系统以灵活的菱形瓦片体现古典的欧式建筑风格，板型可塑性极佳，适用于各种复杂的建筑物造型。

系统参数

板型宽度：200mm，300mm，400mm

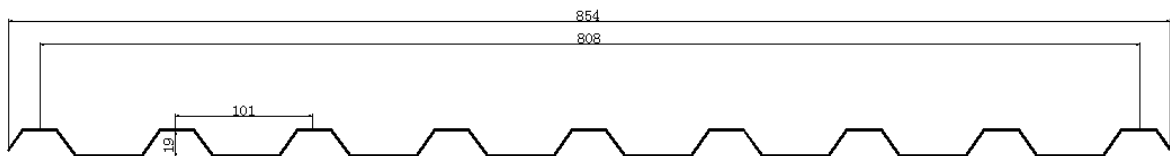
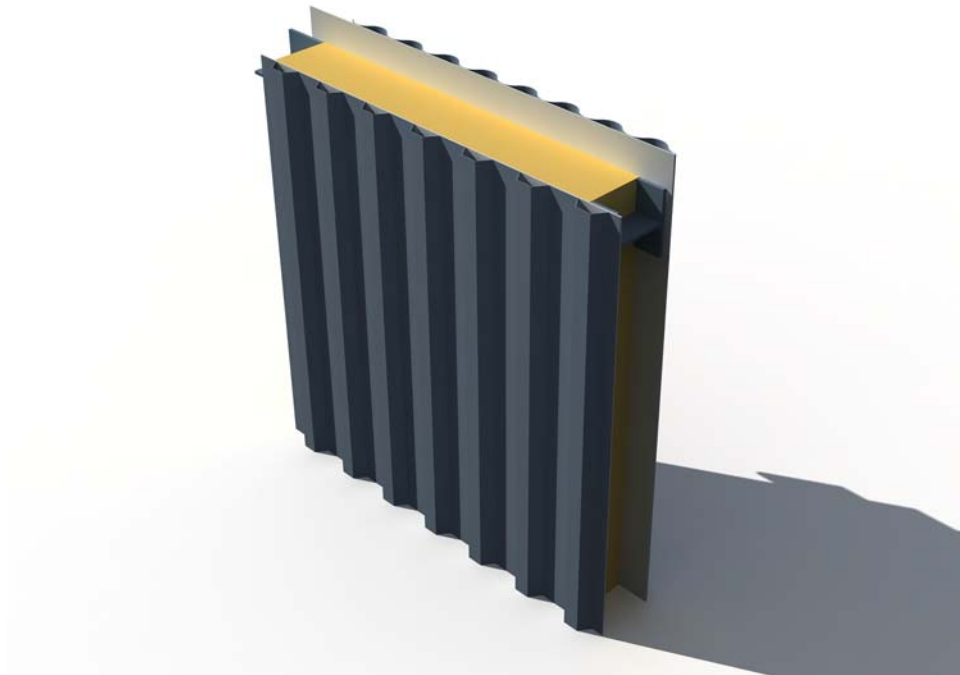
板材厚度：0.7~1.2mm

适用坡度：一般需要铺设防水卷材

首选材料：钛锌板、原锌板



GT-19-808 型金属墙面系统(GT19—808 Metal Cladding System)



Description

GT-19-808 metal cladding profile features linear beautiful appeal, and extreme durability, meeting various design intents and building shapes, especially for high-end factory façade decorations.

Parameters:

Thickness: 0.7~1.2mm

Color: custom

Material: alum zinc steel sheet, aluminium alloy sheet, color bond sheet, etc.

系统描述

GT-19-808 型墙面板美观大方、经久耐用，具有别具一格的线条美感，满足各种建筑风格和造型的要求。
适用于各种高级厂房的内、外墙面装饰。

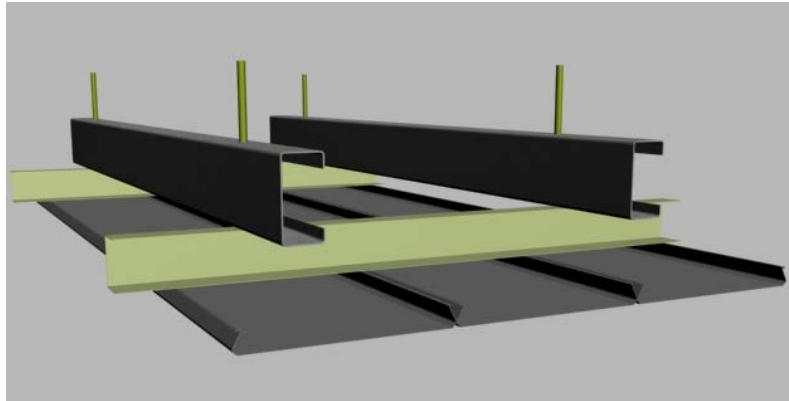
系统参数

板材厚度：0.7~1.2mm

颜色：定制

首选材料：镀铝锌钢板、铝合金板、彩钢板等

GT 金属吊顶系统 (GT Metal Ceiling System)



Description

GT metal ceiling profiles feature versatility, beautiful appeal, and extreme durability, meeting various design intents and building shapes.

Parameters:

Thickness: 0.7~1.2mm

Color: custom

Material: Stainless steel, Titanium, copper, aluminium alloy, honey comb panel, etc.

系统描述

GT 金属吊顶板灵活多样、美观大方、经久耐用，满足各种建筑风格和造型的要求。具有正方板、矩形板、条扣板、方管、片材、异形板等多样化板型。

系统参数

板材厚度: 0.7~1.2mm

颜色: 定制

首选材料: 不锈钢、铝镁锰板、钛锌板、不锈钢板、蜂窝板等



GT 方形瓦片系统 (Rectangular Tile System)

Description

Our permanently-colored stainless steel or alum. roofing tiles will give your project an honest, timeless and classic look. It delivers a combination of extreme durability with design versatility. Beautiful maintenance-free metal tiles are available in natural and color.

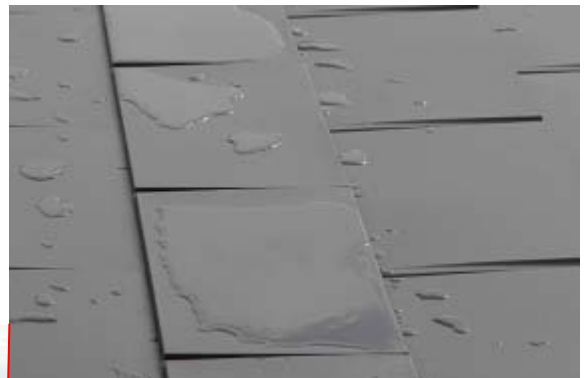
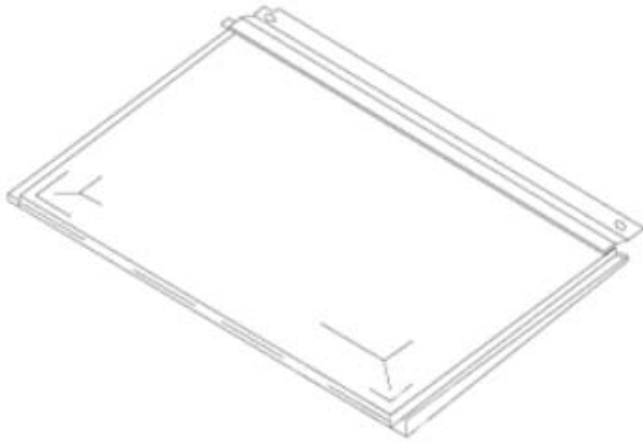
We include a 50 year warranty on all of our metal roofing tiles, to be far outlived by the products. Your residential or commercial project will result in an elegant, timeless appeal.

系统描述

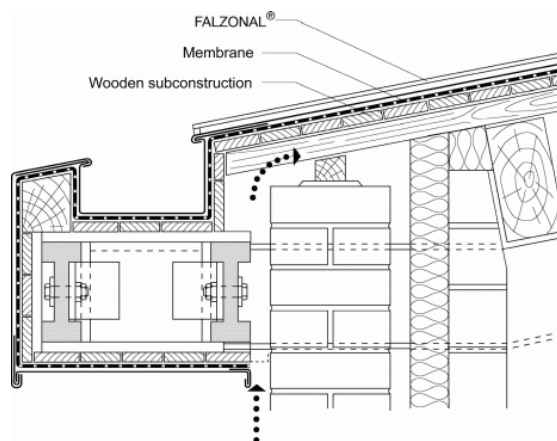
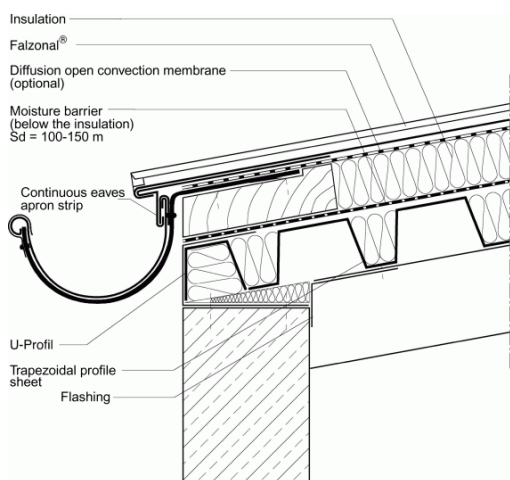
本系统以永恒的色彩，实现质朴、亘久、古典的建筑风格，建筑物形式多样，经久耐用。可采用素色或彩色面板，美观大方，免于维护。

本产品使用寿命达 **50** 年以上，无论是私人豪宅，还是高级会所，均可实现典雅亘久的美学观感。

首选材料：不锈钢板、钛锌板、原锌板、铜板、铝镁锰面板等



GT-金属天沟系统(GT Metal Gutter System)



Description

GT metal gutter system features flexible installation, beautiful appeal, and extreme durability, meeting various drainage design intents and building shapes.

Parameters:

Thickness: 0.7~1.2mm

Color: custom

Material: Stainless steel, Titanium, copper, aluminium alloy, alum zinc steel sheet, etc.



系统描述

GT 金属天沟系统，采用卡槽式固定，安装便捷，美观大方、经久耐用，满足各种建筑排水的要求。具有方形、半圆形、K 型、异形板等多样化板型。适用于各种高级别墅和会所建筑物的檐沟排水。

系统参数

板材厚度：0.7~1.2mm

颜色：定制

首选材料：不锈钢、铝合金板、钛锌板、镀铝锌钢板等



GT 太阳能系统 (GT Solar System)



Description

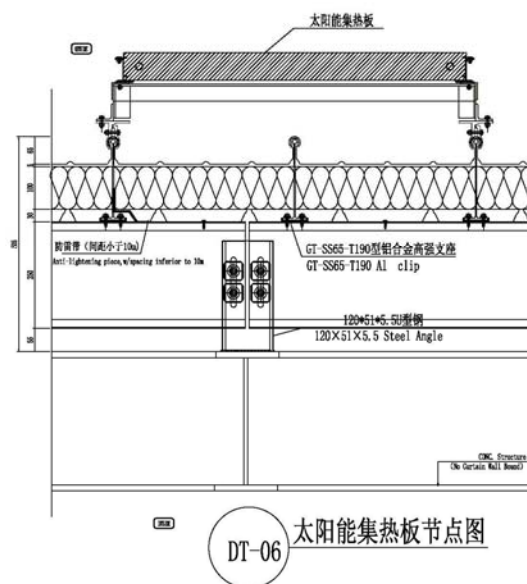
Photovoltaics (PV) electricity is generated through PV modules from solar energy, without emission of carbon dioxide (CO₂) and other harmful gases. A PV module can lower the emission of carbon gases up to 7.5 tons during its service life of 25 years.

Among all of the current applications of solar energy, building integrated photovoltaics system is the most effective way.

系统描述

建筑光伏一体化 BIPV

光伏建筑一体化(BIPV)技术是将太阳能发电(光伏)产品集成或结合到建筑上的技术,既满足建筑设计的美学要求,又符合建筑物节能环保的需要,是一种利用太阳能发电的新型建筑材料。



供选材料(Material Options & Performance)

GT 建筑系统采用绿色环保、经久耐用、美观大方的金属板材，作为系统装饰外壳：

✦ 钛锌板(Titanium Zinc)

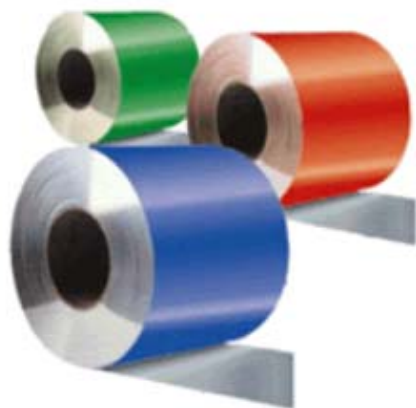
钛锌板具有极强的金属质感，表面美观持久，抗腐蚀能力强，是高端建筑物和永久性建筑物的首选装饰材料。使用寿命可达 80~100 年。进口钛锌板为纯度高达 99.995% 的高品位电解锌，与 1% 的钛和 1% 的铜合金形成，品质卓越。锌是一种有色金属，可循环使用，绿色环保，对环境不会造成任何污染。



✦ 欧美铜板(Copper)

铜板是古典建筑物的首选装饰材料，建筑业用铜板采用半硬状态，可塑性极强，适用于 GT 各种复古建筑系统，具有永久的使用寿命。位于德国的海尔德申姆歌特式教堂(Hildersheim Cathedral)，始建于 1280 年，为保留至今的最古老的铜制屋顶建筑物。

建筑业用铜的生产由英国标准 BS2870 和德国标准 DIN 17650 控制，采用无磷去氧还原铜法加工制造，其具有极佳的氧焊和锡焊性能且防止氧化，英标 BS2870，C106 章规定铜的含量不低于 99.85%，德标 DIN17650 要求铜的纯度必须高于 99.90%。



✦ 铝镁锰合金板(Aluminium Alloy Sheet)

铝镁锰板是一种性价比极高的屋面、外墙装饰材料，广泛应用于各种公建项目和高档建筑的外装饰，为现代建筑向舒适、轻型、耐久、经济、环保等方向发展发挥了重要的作用。建筑设计使用寿命可达 50 年以上。

铝镁锰面板具有不同的合金牌号，如 AA3003，AA3004，AA3005，对于临海的建筑物，还可选择耐腐蚀性能更强的 5000 系列铝镁锰合金材料。铝镁锰板具有多样的表面处理方式：

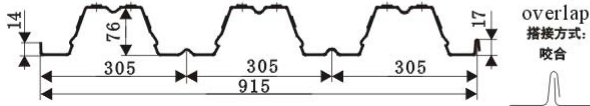
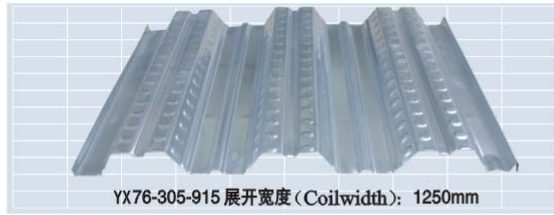
1. 阳极氧化 (Anodized)：表面形成铝纯化膜
2. 本色锤纹 (Stucco Embossed)：机械压花形成
3. 彩涂铝板 (Pre-painted)：包括聚酯(PE)，聚胺酯(PU)，聚酰胺 PA)、聚偏氟乙烯 (PVDF) 等多个有机涂漆体系，尽可能地延长涂漆抵抗太阳光紫外线作用下的老化，其中以氟碳(PVDF)涂漆的抗老化性能最为优良，它是目前人类已知抗紫外线最强的有机合成物。

铝镁锰的性能：

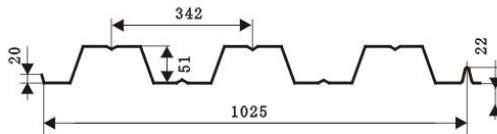
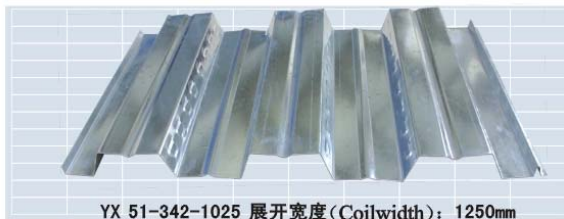
1. 抗拉强度最高可达 265MPa 是普通铝板强度的 2.5 倍；
2. 耐腐蚀性能：是普通铝板的 3 倍，是不锈钢的 2 倍；
3. 降噪音、减震，能承受较大的冲击负荷；
4. 绿色环保，不释放有害毒素；
5. 降低成本、减少材料、延长使用寿命 3 倍。

此外，镀铝锌板、不锈钢板、镀铝板等材料，也是 GT 建筑系统的备选材料。

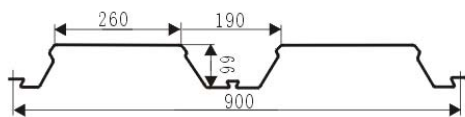
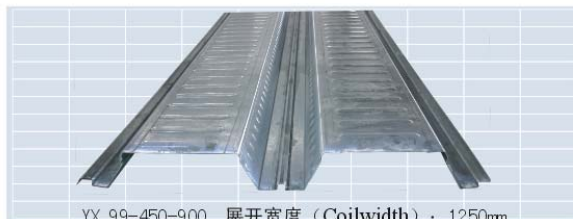
GT- Decker Profiles (常规楼层板):



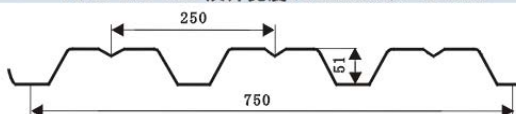
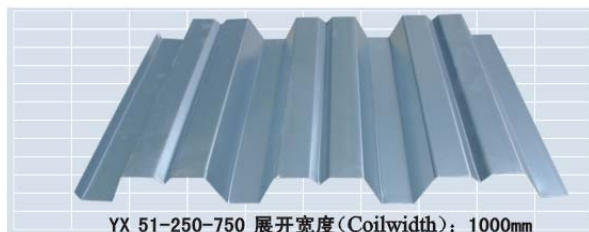
厚度 thickness mm	截面惯性矩 moment of inertia cm ⁴ /m	截面抵抗矩 section of modulus cm ³ /m
0.76	106.6	24.46
0.92	127.9	30.76
1.2	171.3	42.15
1.5	214.1	52.41



厚度 thickness mm	截面惯性矩 moment of inertia cm ⁴ /m	截面抵抗矩 section of modulus cm ³ /m
0.8	46.7	15.2
1.0	63.5	20.13
1.2	73.7	25.6
1.5	92.2	32.4

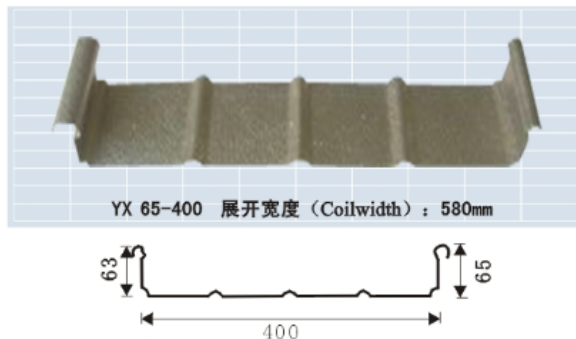


厚度 thickness mm	截面惯性矩 moment of inertia cm ⁴ /m	截面抵抗矩 section of modulus cm ³ /m
1.0	65.97	30.39
1.2	79.16	36.47
1.5	98.95	45.36
1.8	118.75	54.70
2.0	131.94	60.78

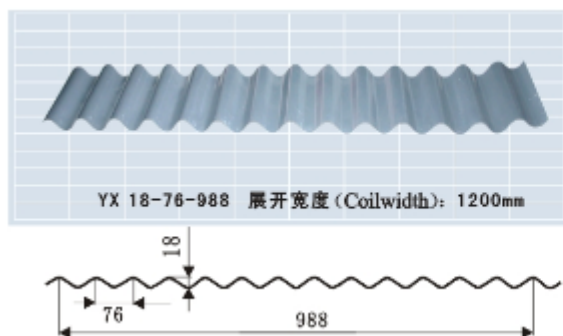


厚度 thickness mm	截面惯性矩 moment of inertia cm ⁴ /m	截面抵抗矩 section of modulus cm ³ /m
0.8	47.67	23.19
1.0	59.56	28.59
1.2	71.44	34.51

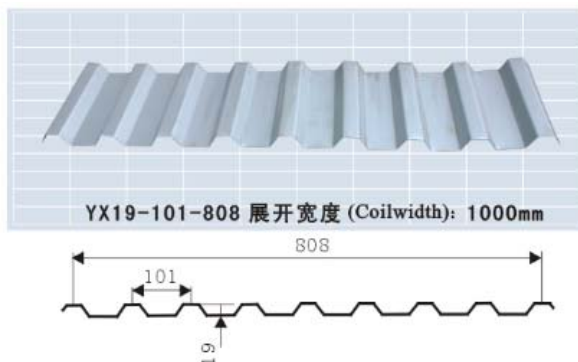
GT Roofing and Cladding Profiles (常规屋面、墙面板):



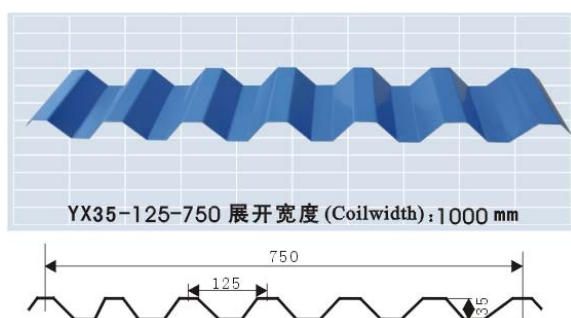
厚度 thickness mm	截面惯性矩 moment of inertia cm ⁴ /m	截面抵抗矩 section of modulus cm ³ /m
0.5	10.83	9.82
0.6	12.67	11.46
0.8	16.52	14.96
1.0	21.66	19.64



厚度 thickness mm	截面惯性矩 moment of inertia cm ⁴ /m	截面抵抗矩 section of modulus cm ³ /m
0.4	4.25	2.34
0.6	7.32	4.43
0.8	10.64	6.42
1.0	14.79	8.56



厚度 thickness mm	截面惯性矩 moment of inertia cm ⁴ /m	截面抵抗矩 section of modulus cm ³ /m
0.6	4.05	3.21
0.7	5.67	4.27
0.8	7.42	5.86
1.0	10.41	7.49



厚度 thickness mm	截面惯性矩 moment of inertia cm ⁴ /m	截面抵抗矩 section of modulus cm ³ /m
0.5	11.54	6.23
0.7	16.51	8.57
1.0	23.54	12.44
1.2	28.25	14.93

SGT 采用德国进口全套屋面系统专业生产线:
Advanced imported production line (Germany)



屋面板压型机(Profiling Machine)



屋面板弯弧机(Curving Machine)



多功能锁边机(Seaming Machine)

北京盘古大观广场(七星摩根广场)(Beijing Pangu Plaza)

工程名称：北京盘古大观广场(七星摩根广场)

系统名称：GT-SS65 直立锁边系统

开发商：北京摩根投资公司

地址：北京市朝阳区北四环中路 27 号

北京盘古大观广场(又名七星摩根广场)，南临北四环中路，东临奥林匹克体育公园，毗邻鸟巢、水立方，为奥林匹克体育公园地区的地标性建筑物之一，集 5A 智能化写字楼、高档酒店、高档公寓和精品商业等建筑功能于一体。



Project Name: Beijing Pangu Plaza
System: GT-SS65 standing seam
Owner: Beijing Morgen Investment Co.
Add: 27 Mid North Ring road, Beijing

Beijing Pangu Plaza is a landmark building in the Olympic park area, adjacent to the Bird Nest, the main Olympic venue, integrated with 5A intelligent office building, luxurious hotels, high-grade apartments, and shopping centers.

The building is designed as the shape of "the oriental dragon", with roofing system structured by GT-SS65 aluminium waterproof layer and 3mm aluminium decoration.

昆明市党政中心 (Kunming Municipal Center)

工程名称: 昆明市党政中心
系统名称: GT-120/500 屋面金属系统
开发商: 昆明市政府

Project Name: Kunming Municipal Center
System: GT-120/500 System
Owner: Kunming Government
Add: Zigong Area, Kunming, Yunnan



本工程为昆明市委、市政府、人大、政协等办公新址,整个建筑物群屋面采用 SGT 公司德国建筑师设计的 GT-120/500 板型,独具匠心地体现了市政工程的庄严气氛以及西南的建筑风格,集保温、防水、抗风压等建筑功能于一体。

The new municipal center is developed for the committee of CPC, municipal government, the political consultative conference, etc.. The roofing system of these buildings adopts GT-120/500 profile, with unique designed appearance for the solemnity of the government as well as the building style in the west, allowing for the integrity of thermal insulation, water tightness, and anti-wind load.



四川省国际网球中心 (Sichuan Tennis Center)

工程名称：四川省国际网球中心
系统名称：GT-25/530 金属屋面系统
开发商：四川省投资集团有限责任公司
总包：和兴玻璃铝业（上海）有限公司

四川省国际网球中心位于成都市双流新城，是四川省的重要公共项目，体现了成都作为国际大都市的标志性建筑，将网球赛场与训练场地、五星级酒店、国宾接待中心、高级商务别墅等集成一体，可举办各类国际赛事。采用 GT DS25/530 钛锌板、铝镁锰合金板板型，系统充分考虑风压、荷载、位移、保温、防水等要求，同时完美实现建筑外观要求。



Project Name: Sichuan Int'l Tennis Center
System: GT-25/530
Developer: Sichuan Investment Group
Main contract: Wah Heng Glass & Aluminium Products (Shanghai) Co. Ltd.

Located in New area of Shuangliu Town, Chengdu, Sichuan province, Sichuan Int'l Tennis Center is one of the key public building projects in the province, and a future landmark building of the Sichuan Province.

SGT contracts the roofing systems for the meeting center and athlete apartments, with reliable solution for wind-load, movement, thermal insulation and watertight-ness.

北京 CEO 首创拓展大厦金属屋面和外立面系统
(Beijing CEO Development Tower)

Project Name: Beijing CEO Development Tower

Main Contractor: Wah Heng (Shanghai) Co. Ltd.

Area: appr. 1500 m² double lock seam system; 4000 m² flat lock seam system.

Descriptions:

1mm ALCAN aluminium alloy double lock seam roofing system and flat seam façade system.

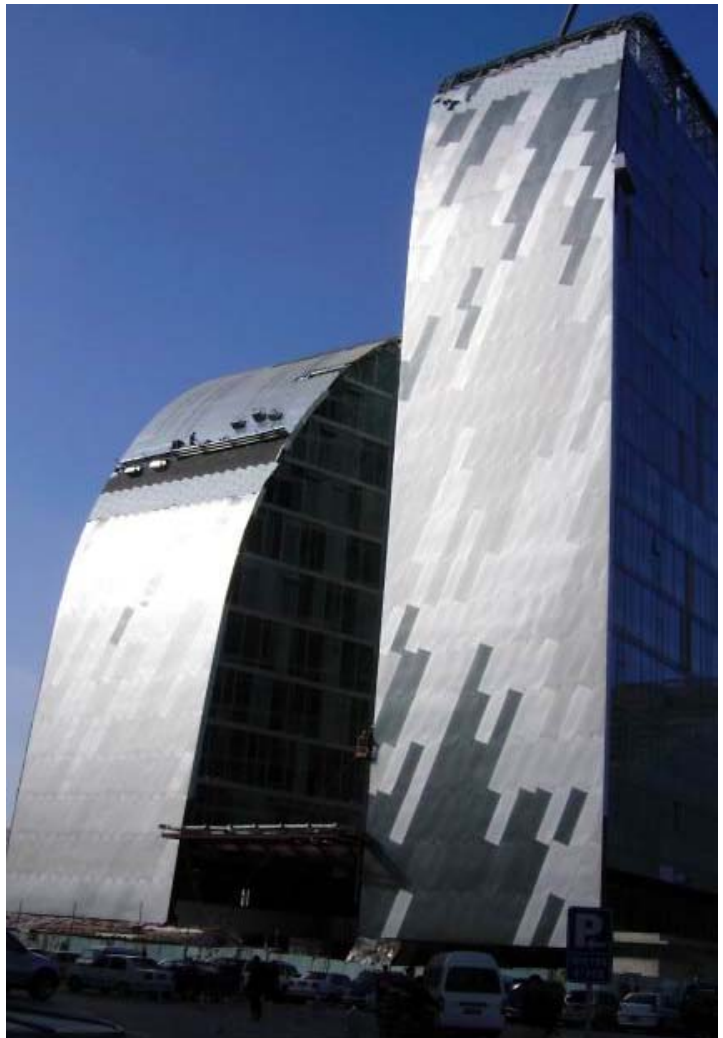
Unique flat seam design with unparallel aesthetical appearance, reliable structure and excellent weathering performance.

总包: 和兴玻璃铝业(上海)有限公司

面积: 双锁扣立边屋面系统 1500 m², 4000 m² 平锁扣外立面系统。

1mm ALCAN 铝合金双锁扣立边屋面系统和平锁扣外立面系统。

独创的平锁扣设计, 具有无与伦比的建筑外观效果, 可靠的结构和优越的耐候性能。



2010 上海世博会西班牙国家馆 (2010 Shanghai Expo Spanish Pavilion)

Project Name(项目名称): 2010 Shanghai Expo Spanish Pavilion

Scope(承包范围): Standing Seam Metal roofing/Facade system (Rhein Zinc) 金属幕墙和屋面系统

Area(面积): appr. 5500 m²

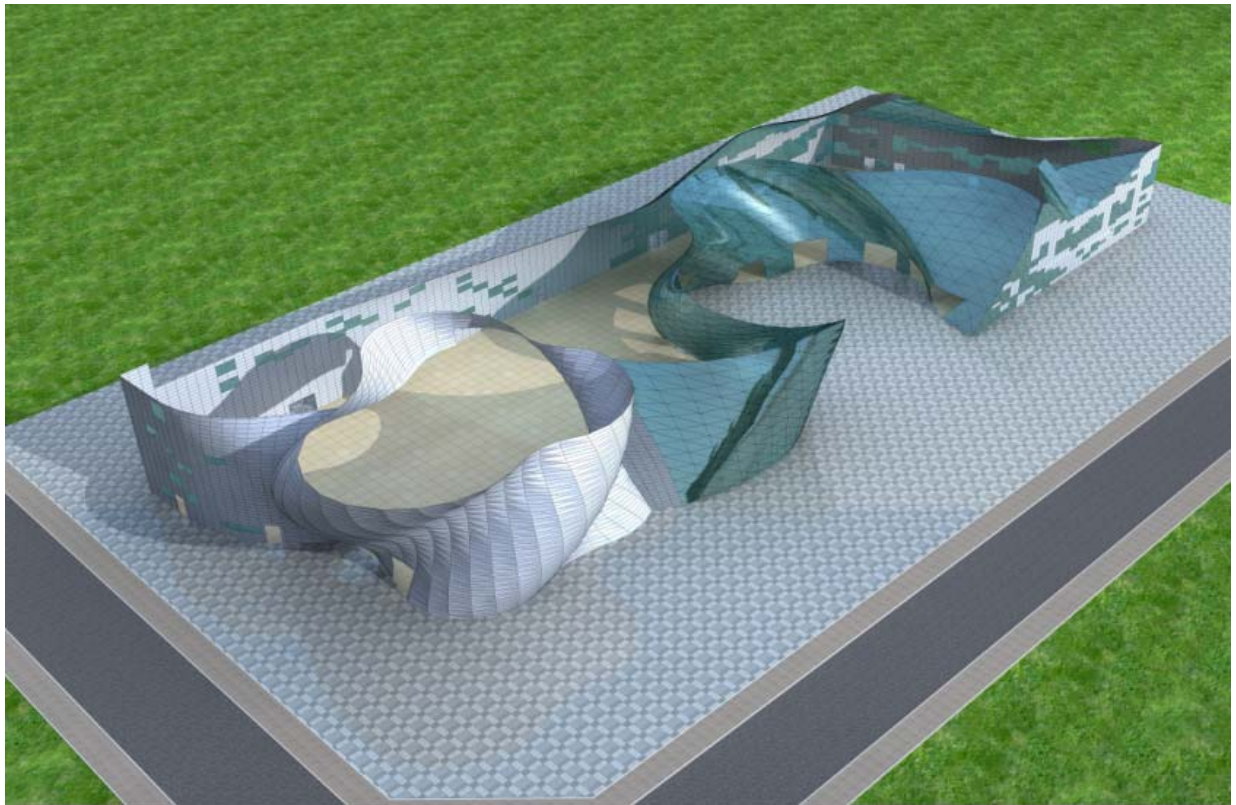
The Spanish Pavilion is built with appr. 5500 smq metal curtain wall to be integrated with the unique design by EMBT in terms of special architectural building technique of knitted withes from Spain, presenting unparalleled visual and art appearance from different view.



The building is integrated with GT-FS titanium flat seam system both as the water-tightness and decoration functions, and the unique withes system.

世博会西班牙展馆使用面积 8500 平方米，金属幕墙施工面积约 5500 平方米，西班牙的建筑师 EMBT 别具匠心地借鉴了西班牙传统工艺——藤编技术，采用拼图法把西班牙不同地区的藤编手法和图案汇集在一起，从不同侧面和角度，展示不同的艺术和视觉效果。

该建筑物呈现不规则曲面造型，外墙和屋顶采用矩迪 GT-FS425 型钛锌板系统，为建筑物的防水和装饰层，与藤条装饰融为一体，在设计、建筑和造型上，均体现极高的艺术要求。



徐州音乐厅(Xuzhou Concert Center)

工程名称(Project): Xuzhou Concert Center

系统名称(System): GT-65 Standing Seam

面积(Area): Appr.3850m²

徐州音乐厅为徐州市重点建设工程，位于江苏徐州市。屋面采用 GT-65 直立锁边铝镁锰系统，具有优越的防水、保温、隔音性能。

Xuzhou Concert Center is one of the key municipal construction project, located in Xuzhou, Jiangsu Province. The roofing system adopts GT-65 standing seam system, with excellent waterproof, thermal and acoustic performance.



以色列海发会议中心 (Haifa Convention Centre, Israel)

Project Name: Haifa Convention Centre, Israel

Scope: Metal roofing design and consultancy

Area: appr. 15000 m²

Double lock standing seam system (0.7mm Falzonal) for the isometric curved shape, with excellent performance of water-tightness, acoustic and thermal insulation, as well as reliable accommodation of thermal movement.



工程名称：以色列海发会议中心

合同范围：金属屋面设计技术顾问

面积：约 15000 m²

0.7mm 双锁扣立边屋面系统，对称弧形屋面，具有优越的防水、隔声、隔热性能，可靠吸收温度位移。

霍夫海姆商务中心 (Hofheim Business Center)

Project Name: Hofheim Business Center

Architect: STROEBL+PARTNER

Scope: Metal roofing system, metal ceiling panel

Area: appr. 2000 m²

建筑师: STROEBL+PARTNER

工程名称: 霍夫海姆商务中心

合同范围: 金属屋面系统, 金属吊顶系统

面积: 约 2000 m²



采用德国 0.7mm Falzonal 铝板, RAL9006 色系, GT 双锁扣立边屋面系统, 严密防水, 保温隔热, 同时可吸收温度位移。别具一格的金属板反吊顶设计, 呈现现代商务中心装饰的现代感。

0.7 mm Falzonal aluminium panel, RAL 9006 color series, GT double lock standing seam system, with excellent waterproof, thermal insulation, and movement performance. Unique metal ceiling panel design reflects the theme of modern business center.



昌凯长吉中学金属屋面 (Changkai Changji Secondary School)

Project Name: Changkat Changi Secondary School

Owner: PWD

Scope: Metal roofing system

Area: appr. 7000 m²

业主: PWD

工程名称: 昌凯长吉中学金属屋面

合同范围: 金属屋面系统

面积: 约 7000 m²

0.7mm PVDF coated aluminium double locked roofing system. Continuous panel running through the length of the building, accommodating thermal movement, with excellent water-tightness. Simple conceptual shape embodies modern architectural theme.

采用 0.7mm 氟碳涂漆铝板，双锁扣立边屋面系统。通长板块覆盖整个屋面，吸收温度位移，严密防水。简洁的造型，蕴含现代建筑主题。



新加坡醒华小学金属屋面工程(Xinghua Primary School at Hougang Ave.2)

Project Name: Xinghua Primary School at Hougang Ave.2

Scope: Metal roofing system

Area: appr. 6000 m²

工程名称：醒华小学金属屋面工程

合同范围：金属屋面系统

面积：约 6000 m²

采用 0.7mm 氟碳涂漆铝镁锰合金屋面板，双锁扣立边系统，通长屋面板块，360 度双锁扣立边，严密防水，保温隔热，吸音降噪。



0.7 PVDF coated aluminium double lock seam roofing system, continuous panel running through the whole length of the building, 360 degree double locked seam, ensuring perfect water-tightness, thermal and acoustic insulation.

贝多克新水厂办公楼（新加坡）

(Office Building of New Water Factory, Singapore)

总包：GTMS

工程名称：贝多克新水厂办公楼金属屋面工程(新加坡)

系统：GT 双锁扣立边系统

面积：约 10000 m²



Project Name: Office Building of
New Water Factory (Singapore)
System: Double standing seam
Main Contractor: GTMS

Descriptions:

0.4mm imported stainless steel (Roofinox) from Switzerland, double lock seam roofing system. With double lock seam at the all critical conditions of eaves, gutters, ridges, skylights, etc., the stainless steel roofing system achieves better anti-corrosion, waterproof and weather performance for a longer service life, as well as realizing the design intent of the architect.



工程描述

瑞士进口 Roofinox 牌 0.4mm 不锈钢板，双锁扣立边屋面系统。在檐口、天沟、屋脊、天窗等关键收口部位，采用双锁扣立边节点处理，可实现更好的防腐、防水和耐候性能，可达到更长的使用寿命，同时也满足了建筑师的设计意图。

法兰克福青铜板金属屋面(Frankfurt Patina Copper Metal Roofing System)

0.7mm copper patina, double lock standing seam roofing and façade system, with modern technology for ancient theme.

0.7 青铜双锁扣立边墙面、屋面系统，古老主题，现代工艺。



维斯巴顿铜制金属屋面(Wiesbaden Copper Roofing System)

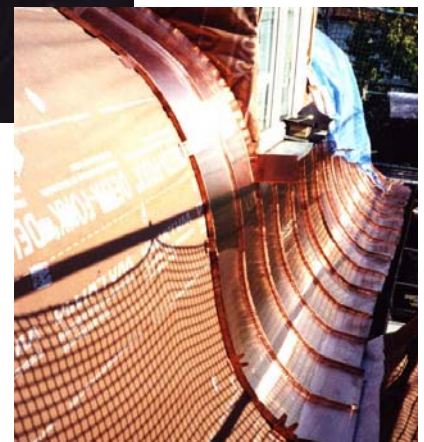
工程名称(Project Name): Wiesbaden 铜制金属屋面

开发商(Owner): Winter Garden



0.7 mm copper, double-lock standing seam roofing system.
360 degree locked seam at every interface for excellent
water-tight performance and longer service life.

0.7 mm 铜制双锁扣屋面系统，每个接口均使用 360 度机械咬合，严密防水，铜制材料的应用使屋面系统使用寿命更持久。



马来西亚布城政府办公楼金属屋面(Putrajaya Government Office Building, Malasia)

工程名称: Putrajaya Government Office Building, Malasia

总包: SWISSMA MALAYSIA (SINGAPORE)

面积: appr. 31295 m²

0.7 mm PVDF 预辊涂铝板平锁扣系统, 灵活的系统使该建筑的特殊造型得以完美实现, 具有优越的防水和隔热性能。



Project Name: Putrajaya Government Office Building, Malasia

Main Contractor: SWISSMA MALAYSIA (SINGAPORE)

Area: appr. 31295 m²

Flat seam roofing system, 0.7 mm PVDF coated aluminium sheet. The flexible system achieves the special shape of the building, with perfect performance of water-tightness and thermal insulation.

圣淘沙钛锌板金属屋面工程(SENTOSA ISLAND)

工程名称(Project Name): SENTOSA ISLAND, PALAWAN BEACH STATION AND DEPOT

开发商(Developer): SG-BOGEN PTE.LTD.

面积(Area): appr. 4500 m²



Titanium zinc double-lock seam roofing system, with two elliptical shapes overlapped together to achieve modern architectural concept. Our unique solution help realize the aesthetical design of the architect.

钛锌板双锁扣立边系统，两个相叠加的半椭球屋面系统体现了现代建筑的设计观念，SGT 独一无二的设计方案实现了建筑师的美学设计理念。

檀派斯消防站办公楼 (Tampines Fire Station, 2nd Headquarter, Singapore)

工程名称(Project Name): Tampines Fire Station, 2nd Headquarter, Singapore

总包(Main Contractor): GTMS, Singapore

面积(Area): appr. 3500 m²

GT 直立锁边系统, 0.9mm PVDF 德国进口预辊涂铝板。简洁明快的设计, 实现建筑师的建筑美学设计, 同时确保建筑防水和保温性能。

GT standing seam roofing system, 0.9MM PVDF project. Simplified design realizes the aesthetical concept of the architect, while guaranteeing performance of water-tightness and thermal insulation.



Tampines Fire Station, 2nd Headquarter, Singapore

霍夫海姆别墅 (Hofheim Villa)



Project Name: Hofheim Villa
Scope: Metal roofing system
Area: appr. 900 m²

工程名称: Hofheim Villa
工程范围: 金属屋面系统
面积: 约 900 m²

0.7 mm Fazonal aluminium double locked standing seam roofing system, with overall solutions for skylight and eaves, meeting thermal and acoustic insulation of villa buildings. Innovative design combines the philosophy of modern architecture and the nature.

0.7 mm 德国 fazonal 铝镁锰合金屋面板, 双锁扣立边屋面系统, 完美的天窗、檐口节点处理, 满足别墅保温隔热、吸音降噪的建筑功能需求。新颖的设计将现代建筑物与大自然融为一体。

舒茨巴赫别墅 (Sulzbach/T5)

工程名称: Sulzbach/T5

建筑师: STROEBL+PARTNER

工程范围: 金属屋面系统

面积: 约 450m²

0.7 mm 德国 fazonal 铝镁锰合金屋面板, 双锁扣立边屋面系统, 完美的天窗、檐口节点处理, 满足别墅保温隔热、吸音降噪的建筑功能需求。新颖的设计将现代建筑物与大自然融为一体。

Project Name: Sulzbach/T5

Architect:

STROEBL+PARTNER

Scope: Metal roofing system

Area: appr. 450 m²

0.7 mm Fazonal aluminium double locked standing seam roofing system, with overall solutions for skylight and eaves, meeting thermal and acoustic insulation of villa buildings. Innovative design combines the philosophy of modern architecture and the nature.



三星大厦(新加坡)(Samsung Building, Singapore)

工程名称: Samsung Building, Church street, Singapore

总包: SG-BOGEN.

材质: 0.4mm 钛金属

承包范围: 大堂立柱的设计、加工及施工

质量要求: 无尖锐转角; 无盖板或泛水板; 无外露固定件; 完美的外观效果

Project Name: Samsung Building, Church street, Singapore

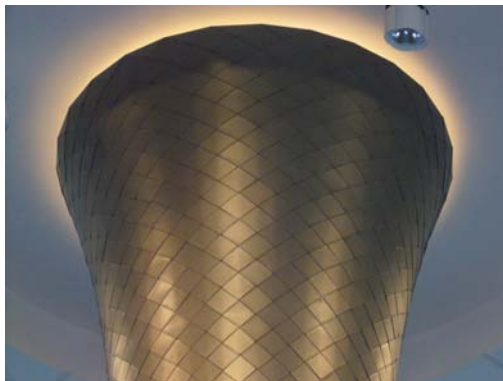
Main Contractor: SG-BOGEN.

Material: 0.4mm pure titanium

Work Scope: Design, fabrication, and installation

Project requirement:-No sharp corner

- No gap between each panel
- No capping or flashing
- No visual fixing points
- Perfect appearance



苏州中茵皇冠假日酒店(Suzhou Crowne Plaza)

工程名称(Project): Suzhou Crown Plaza

系统名称(System): GT-65 Standing Seam

面积(Area): Appr.3000m²

Suzhou Crown Plaza is a five star international hotel located at economic park of the city, adjacent to Jin Ji Lake. The roofing system adopts GT-65 standing seam system, with excellent waterproof, thermal and acoustic performance.



苏州中茵皇冠假日酒店是苏州第一家五星级中国园林式酒店，位于苏州工业园区的中心位置金鸡湖畔。屋面采用 GT-65 直立锁边系统，具有优越的防水、保温、隔音性能。

济南奥林匹克体育中心体育馆(Jinan Olympic Center)

工程名称(Project): Jinan Olympic Center

系统名称(System): GT-Diamond Tile System and Double Lock Seam System

面积(Area): Appr.16800m²

济南奥体中心体育馆呈荷花造型，具有极强的艺术美感，采用 GT 菱形瓦片和 DS 双锁扣系统，完美体现体育场馆的建筑外观和整体防水、保温、隔热等性能。

Jinan Olympic Center adopts GT-Diamond Tile System and Double Lock Seam System to achieve an excellent architectural appearance of Lotus Flower, with excellent waterproof, thermal and acoustic performance as required by large scale stadium buildings.



铁岭体育馆(Tieling Stadium)

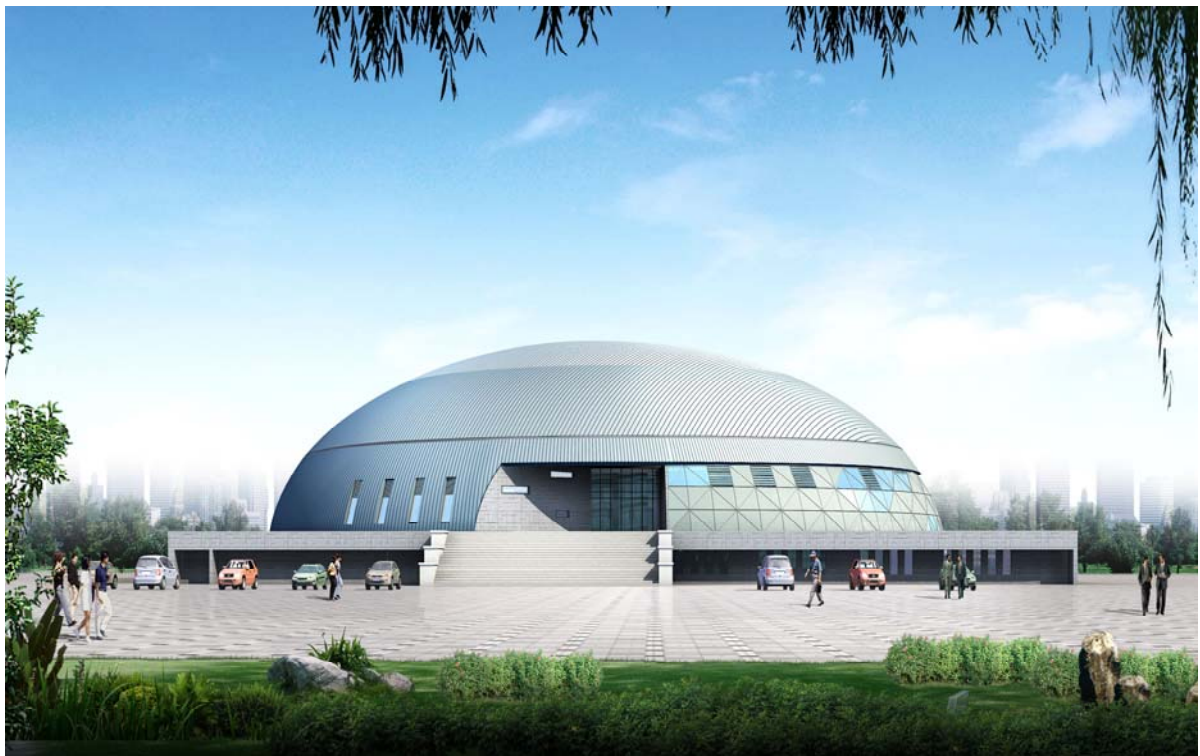
工程名称(Project): Tieling Stadium

系统名称(System): GT-25 Double Standing Seam System

面积(Area): Appr.5500m²

采用 GT DS25/530 钛锌板系统,充分考虑风压、荷载、位移、保温、防水等要求,同时完美实现建筑外观要求。

GT DS25/530 titanium zinc roofing system, with reliable solution for wind-load, movement, thermal insulation and watertight-ness.





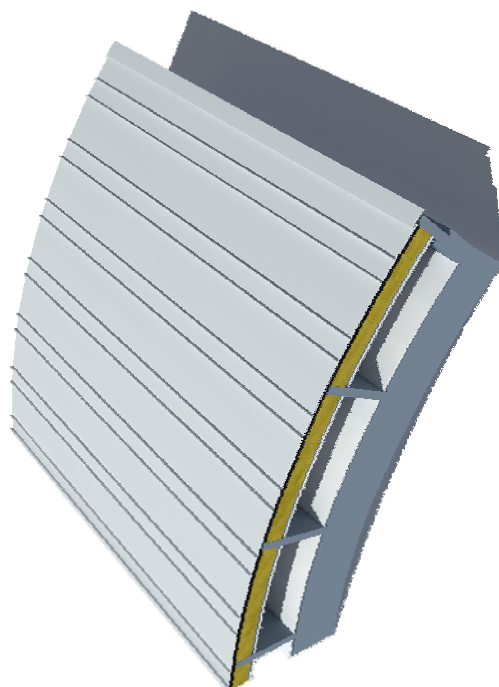
工程名称(Project): Hefei Xinqiao Int'l Airport Terminal

系统名称(System): GT-IT36-268 Cladding/Roofing System

面积(Area): Appr.18000m²

合肥新桥国际机场航站楼采用 GT-IT36-268 墙面、屋面系统，水平线条分格下更彰显金属质感。系统具有完美的防水、保温、隔音性能，同时满足建筑师的外观要求。

GT-IT36-268 system is applied for cladding and roofing systems of Hefei Xinqiao Int'l Airport Terminal. The linear division reveals metallic aesthetics. The system meets the design intent of the architect with perfect performance integrated with water-tightness, thermal/acoustic insulation and architectural appearance.



上海崇明明珠湖田园度假村 (Shanghai Mingzhuhu Villas Phase I)

工程名称(Project): Shanghai Mingzhuhu Villas

系统名称(System): GT-25 Double Standing Seam System, flat seam system

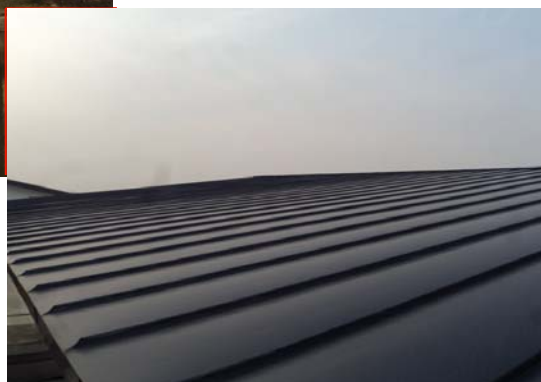
别墅采用 GT-25 立边咬合屋面系统和平锁扣装饰墙面，采用使用寿命长达 50 年以上的铝镁锰合金板，完美实现建筑师的外观要求，同时充分考虑风压、荷载、位移、保温、防水等要求。

The project uses GT-25 double lock seam roofing and flat seam cladding systems, perfectly satisfying the design intent of the architect, with reliable solution for wind-load, thermal movement, acoustic insulation and watertight-ness.



Project Name: Mingzhuhu Villas, Shanghai

工程名称：上海明珠湖民俗风情度假村



上海崇明田园风光一期(Shanghai Chongming Villas Phase I)

工程名称(Project): Shanghai Chongming Villas

系统名称(System): GT-25 Double Standing Seam System, flat seam system

别墅采用 GT-25 立边咬合屋面系统和平锁扣装饰墙面，采用使用寿命长达 50 年以上的铝镁锰合金板，完美实现建筑师的外观要求，同时充分考虑风压、荷载、位移、保温、防水等要求。

The project uses GT-25 double lock seam roofing and flat seam cladding systems, perfectly satisfying the design intent of the architect, with reliable solution for wind-load, thermal movement, acoustic insulation and watertight-ness.



上海皇朝别墅 (Shanghai Dynasty Villa)

工程名称(Project): Shanghai Dynasty Villa

系统名称(System): GT-25 Double Standing Seam System,
flat seam system

包括穹顶、拱形窗、平锁扣装饰墙面，完美实现建筑师的外观要求，同时充分考虑风压、荷载、位移、保温、防水等要求。

The project includes dome roof, arch window, and flat seam wall decoration system, perfectly satisfying the design intent of the architect, with reliable solution for wind-load, movement, thermal insulation and watertight-ness.





Project: Shanghai Kangqiao Holiday Inn
System: GT-SS65 Standing Seam Roofing System
Owner: Shanghai Pudong Shenggao Holiday Inn

工程名称:上海浦东康桥假日大酒店
系统名称: GT-SS65 直立锁边系统
业 主: 上海浦东盛高假日大酒店



Project: Shanghai Bund Garden Phase II
System: GT-DS25 Double-lock Standing Seam
Owner: China Resources Land Limited

工程名称: 上海外滩花园二期
系统名称: GT-DS25 立边咬合屋面系统
业 主: 华润置地



Project: Shandong Weihai Stadium
System: GT-18-76 Corrugated Sheet
Owner: Shandong Weihai Government

工程名称: 山东威海文登体育中心
系统名称: GT-18-76 波纹板系统
业 主: 山东威海文登体育局



Project: Lang Ya Shan Int'l Resort Center
System: GT-DS25 Double-lock Standing Seam
Owner: Lang Ya Shan Int'l Resort Center

工程名称: 琅琊山国际旅游度假中心
系统名称: GT-DS25 立边咬合屋面系统
业 主: 琅琊山国际旅游度假中心

越南岘港国家体育馆(Danang National Stadium, Vietnam)

工程名称(Project): Danang National Stadium, Vietnam

系统名称(System): GT-65 Standing Seam

面积(Area): Appr.8800m²

岘港国家体育馆为越南 2010 年国家运动会的主要场馆，位于越南第二大港口城市岘港。屋面采用 GT-65 直立锁边铝镁锰系统，具有优越的防水、保温、隔音性能。

Danang National Stadium is the main venue for Vietnam national level sports meeting to be held at end of 2010, located in the 2nd largest port city. The roofing system adopts GT-65 standing seam system, with excellent waterproof, thermal and acoustic performance.



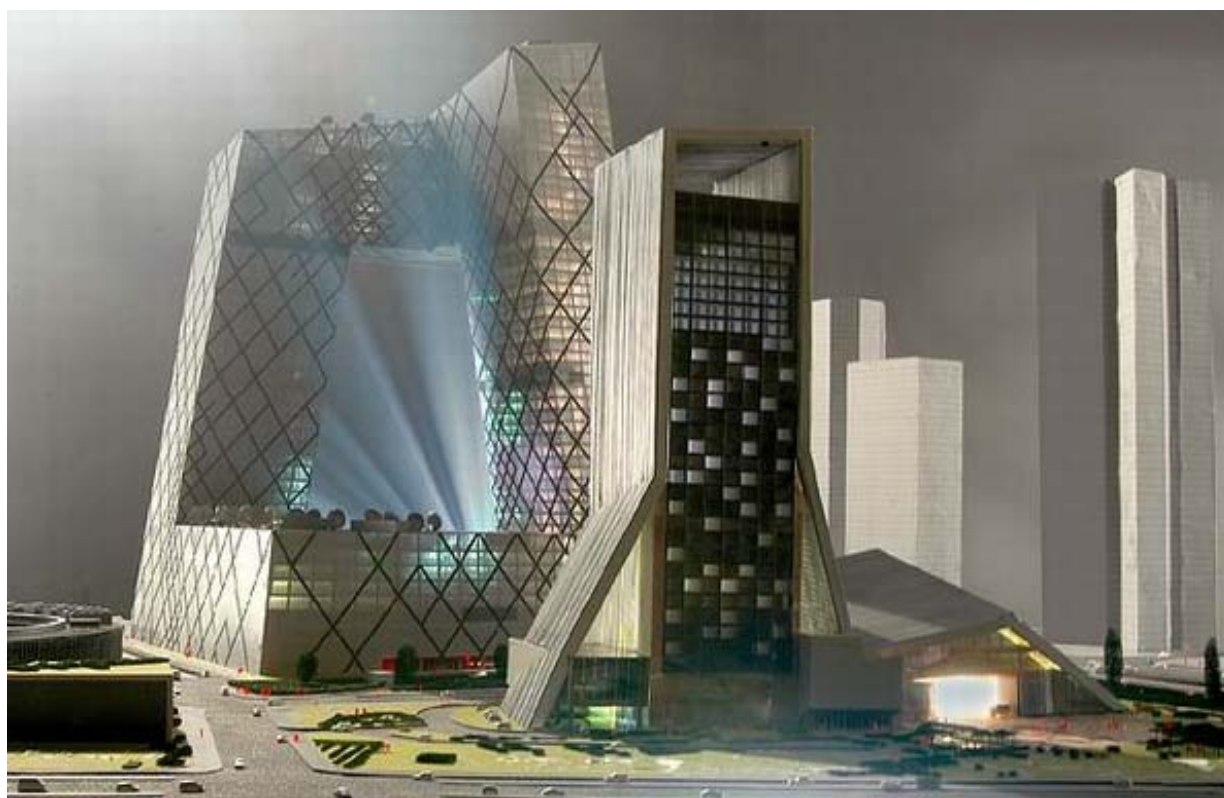


工程名称(Project): VATTANAC CAPITAL(柬埔寨)
系统名称(System): GT-DS25 Titanium 钛锌板系统
业主(Owner): VATTANAC PROPERTIES LTD
面积(Area): Appr. 4100m²

中央电视台电视文化中心(CCTV New Office Building)

开发商：中央电视台 建筑师：OMA
工程名称：中央电视台电视文化中心（重建工程）
合同范围：钛锌板及直立锁边系统
面积：约 93000 m²

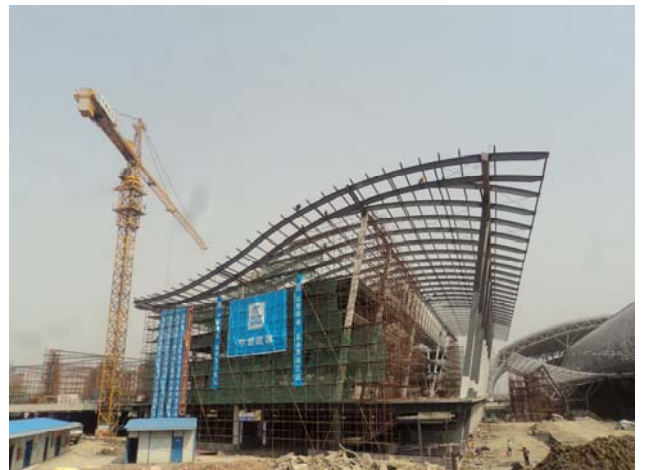
Project Name: CCTV New Office Building
Architect: OMA
Scope: GT-SS65-400 Standing Seam System
Area: appr. 93000 m²



京沪高铁无锡火车东站 (Wuxi East Railway Station)

Project Name: Wuxi East Railway Station
Scope: GT-SS65-400 Standing Seam System
Area: appr. 10000 m²

建设方: 无锡铁路局
工程名称: 京沪高铁无锡火车东站 (二标段)
合同范围: 直立锁边系统及吊顶系统
面积: 约 10000 m²



澳门威尼斯人 5~6 期 (Venetian Orient Parcel 5&6 T6B Roof Canopy)

Project Name: Venetian Orient Parcel 5&6 T6B Roof Canopy

Scope: GT-SS65-400 Standing Seam System

Area: appr. 3000 m²

建设方: 澳门威尼斯人

工程名称: 澳门威尼斯人 5~6 期

合同范围: GT-SS65-430 型直立锁边金属屋面系统

面积: 约 3000 m²





工程名称：重庆赛迪大厦 2 期
合同范围：GT-DS25-430 立边咬合墙面系统
面积：约 6800 m²

Project Name: Chongqing Saidi Tower Phase II
Scope: GT-DS25-430 Standing Seam System
Area: appr. 6800 m²

昆明滇池国家旅游度假区中心主展馆、次展馆(Kunming Dianchi Exhibition Center)

Project Name: Kunming Dianchi Exhibition Center

Scope: GT-DS25-430 Standing Seam System, metal ceiling system

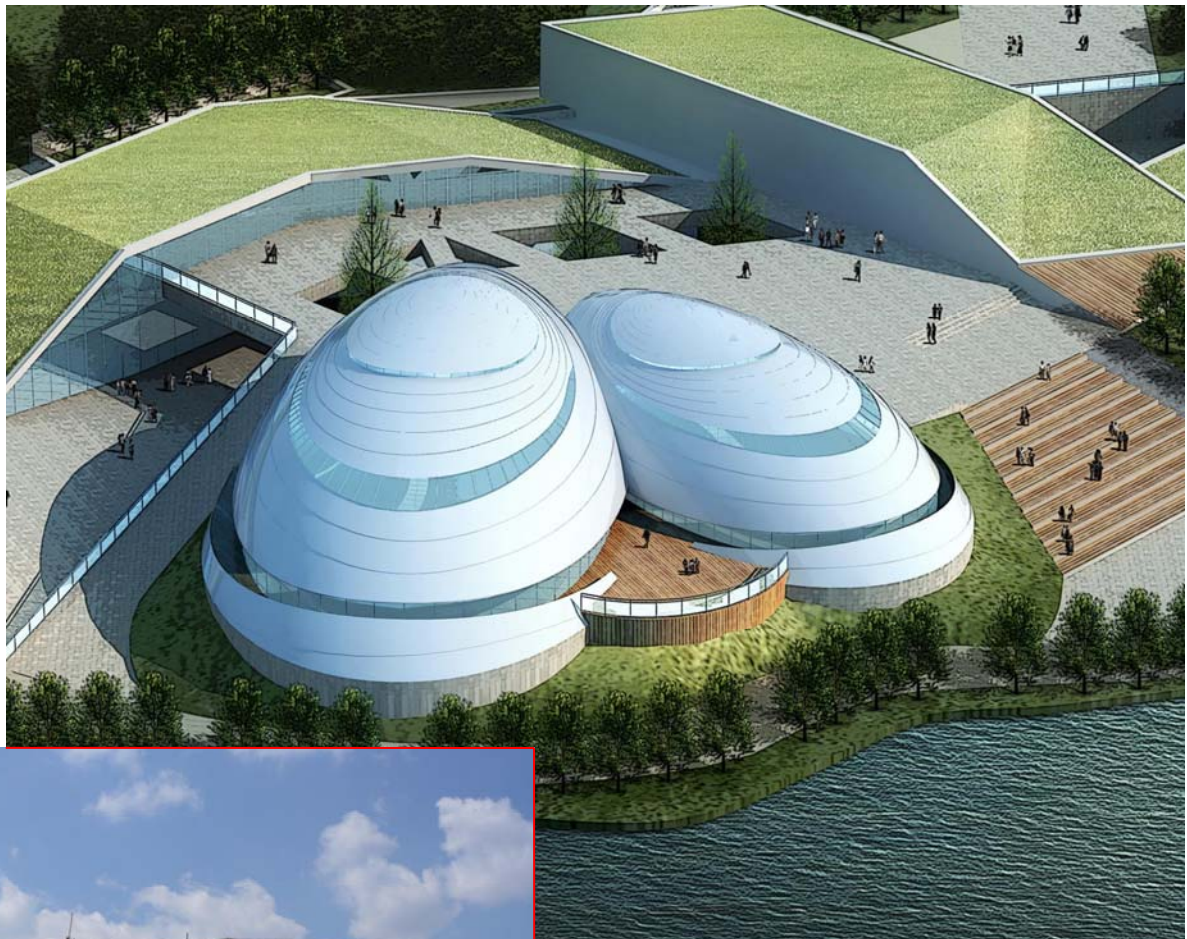
Area: appr. 6000 m²

建设方: 昆明市政府

工程名称: 昆明滇池国家旅游度假区中心主展馆、次展馆

合同范围: GT-DS25-430 型双锁扣立边咬合金属屋面系统、金属吊顶系统

面积: 约 6000 m²



奔驰 4S 店展厅 (4S Benz Show-room)

Project Name: 4S Benz Show-room

Scope: GT- CS18-76-1080 Corrugated Profile

Application: all 4S Benz show room cladding in China,

e.g., Shanghai, Nanjing, Cixi, Changzhou, Xuzhou, Linyi,

Shijiazhuang, Beijing, Chongqing, Nanning, Nantong, Jiaxing, etc.

项目名称: 奔驰 4S 店

产品名称: GT- CS18-76-1080 波纹板

应用范围: 全国各地奔驰 4S 店, 如上海汇之星、上海普陀 4S 店、上海利星行、南京奔驰 4S 店、慈溪奔驰 4S 店、常州奔驰 4S 店、徐州奔驰 4S 店、临沂奔驰 4S 店、石家庄奔驰 4S 店、北京花乡桥奔驰 4S 店、重庆奔驰 4S 店、南通奔驰 4S 店、嘉兴奔驰 4S 店等。





工程名称：苏州利物浦大学
合同范围：GT-FS25-320 型平锁扣系统
面积：约 9500 m²

Project Name: Suzhou Liverpool University
Scope: GT-FS25-320 Flat Seam Cladding System
Area: appr. 9500 m²

其它工程(Other projects)

序号	工程名称	系统描述	面积	业主/总包
China (中国片区)				
1	京沪高铁无锡东站	GT-SS65 直立锁边系统	10000 m ²	中建
2	CCTV 中央电视台电视文化中心	钛锌板系统 铝镁锰直立锁边屋面系统	93000 m ²	SX
3	世博会西班牙馆 2010 Expo Spanish Pavilion	0.7mm 钛锌板系统 GT-FS425 Titanium System	5500 m ²	中建
4	北京大悦城 Beijing Dayue Centre	1.2mm 波纹板系统 GT35-135 Sinusoidal profile	1000 m ²	北京亨特
5	北京盘古大观广场(又名七星摩根广场) Beijing Pangu Plaza	GT65-400 直立锁边系统 GT65-400 standing seam system	3500 m ²	SX
6	昆明党政中心 Kunming Municipal Center	GT120-500 瓦楞型金属屋面系统 GT120-500 corrugated roofing	9500 m ²	中建
7	四川川投国际网球中心 Chengdu Tennis Center	GT25-530 双锁扣立边系统 GT25-530 angle seam system	5500 m ²	WAHHENG
8	上海汇之星奔驰展厅 Shanghai Benz Exhibition	GT18-76 铝合金波纹板 GT18-76 Corrugated system	500 m ²	
9	上海桃浦奔驰展厅 Shanghai Benz Exhibition	GT18-76 铝合金波纹板 GT18-76 Corrugated system	550 m ²	
10	苏州中茵皇冠假日酒店 Suzhou Crowne Plaza	GT65-400 直立锁边系统 GT65-400 standing seam system	3000 m ²	五环
11	济南奥林匹克体育中心 Jinan Olympic Center	GT-Diamond tile system; GT-DS double lock seam system	16800 m ²	远大
12	铁岭体育馆 Tieling Stadium	GT25-530 双锁扣立边系统 GT25-530 angle seam system	5500 m ²	
13	沈阳吉宝镇二期 Keppel Town	GT25-530 双锁扣立边系统 GT25-530 angle seam system	4800 m ²	中建
14	重庆赛迪大厦 Chongqing Saidi Tower	GT25-430 双锁扣立边系统 GT25-430 seam system	6800 m ²	江河
15	上海崇明明珠湖别墅 Shanghai Chongming Villa	GT25-430 双锁扣立边系统 GT25-430 system (Titanium)	3000 m ²	上海劲华
16	临沂奔驰展厅 Linyi Benz Exhibition Center	18-76 corrugated system	2000 m ²	
17	太仓萨普 ZAPP (Taicang)	18-76 corrugated system	3000 m ²	奥林匹克
18	Vietnam Danang Stadium	GT65-430 standing seam	19000 m ²	远大
19	徐州音乐厅 Xuzhou Concert Center	GT65-400 直立锁边系统 GT65-400 standing seam system	3850 m ²	远大
20	合肥新桥国际机场 Hefei Xinqiao Int'l Airport	GT25-430 双锁扣立边系统 GT25-430 system (Aluminium)	18000 m ²	远大
21	上海大众技术服务中心 Shanghai Volkswagen	GT65-430 直立锁边系统 GT65-430 system (Aluminium)	1600 m ²	南通建工
22	青岛海尔总部大厦 Qingdao Haier Tower	GT65-400 直立锁边系统 GT65-400 standing seam system	2600 m ²	海尔

No.	Project Name	Description	Area	Owner/main contractor
Germany (德国片区)				
1	Eisenach	0.7 mm Falzonal, double standing seam, color 1729-20	5000 m ²	
2	Denmark club house	0.7 mm Falzonal, double standing seam, color RAL9006	7000 m ²	
3	Wiesbaden	1.0mm 3005 H49 Falzonal, double standing seam, color RAL9006	13000 m ²	
4	Sulzbach/T5 (16)	0.7 mm Falzonal, double standing seam, color RAL9006	4000 m ²	
5	Hatters Heim (21)	0.7 mm Falzonal, double standing seam, color RAL9006RAL9007	5000 m ²	
6	Hofheim	0.7 mm Falzonal, double standing seam, color RAL9007	900 m ²	
7	Hofheim	0.7 mm Falzonal, double standing seam, color RAL9007	850 m ²	
8	Hofheim	0.7 mm Falzonal, double standing seam, color 2923-40	800 m ²	
9	Bad-Soden	0.7 mm Falzonal, double standing seam, color RAL9006	1700 m ²	
10	Bad-Soden	0.7 mm Falzonal, double standing seam, color 1729-20	900 m ²	
11	Nouberg	0.7 mm Falzonal, double standing seam, color RAL9006	600 m ²	
12	Frankfurt/Main	Copper 0.7mm KME	830 m ²	
13	Frankfurt/Main	Copper 0.7mm KME	770 m ²	
14	Frankfurt/Main	0.7 mm Falzonal, double standing seam, color 1729-20	670 m ²	
15	Limborg	0.7 mm Falzonal, double standing seam, color RAL9006	560 m ²	
16	Hofheim	0.7 mm Falzonal, double standing seam, color RAL9006	2000 m ²	
17	Kronberg	0.7 mm Falzonal, double standing seam, color 1532-20	500 m ²	
18	Hattersheim	0.7 mm Falzonal, double standing seam, color RAL9010	1900 m ²	
19	Bad-Soden	0.7 mm Falzonal, double standing seam, color RAL9007	2000 m ²	
20	Bad-Soden	0.7 mm Falzonal, double standing seam, color 1773-20	360 m ²	
21	Eltuille	0.7mm Tifanzinc VM-Zinc double lock standing seam	800 m ²	
22	Kronberg/Ts	0.7 mm Falzonal, double standing seam, color RAL9006	600 m ²	
23	Keilkheim/Ts	0.7 mm Falzonal, double standing seam	700 m ²	
24	Keilkheim	0.7 mm Falzonal, double standing seam, color 1729-20	2000 m ²	
25	Keilkheim	0.7 mm Falzonal, double standing seam	500 m ²	
26	Business House (Details)	0.7 mm Falzonal, double standing seam	1370 m ²	
27	Frankfurt	0.7 copper double standing seam	500 m ²	
28	Wiesbaden	0.7 copper double standing seam	300 m ²	
29	Limburg	0.7 mm Falzonal, double standing seam, diamond flat seam	550 m ²	

No.	Project Name	Description	Area	Owner/main contractor
Southeast Asia (东南亚片区)				
1	Sengkang Secondary School	0.8mm PVDF aluminium double lock seam	4500 m ²	PWD
2	Yuhua Primary School at Jurong East St.24	0.8mm PVDF aluminium double lock seam	4500 m ²	PWD
3	Changkat Changi South School at Simei Site 21,St.3	0.7mm PVDF aluminium double lock seam	7000 m ²	PWD
4	Re-Building of School at Ang Mo Kio St.22	0.7mm PVDF Falzonal aluminium double lock seam	4500 m ²	PWD
5	Re-Building of Chong Boon Secondary School @Ang Mo Kio St.44	0.7mm PVDF Falzonal aluminium double lock seam	5500 m ²	PWD
6	Pasir Ris Junior College	0.7mm PVDF aluminium double lock seam	6000 m ²	PWD
7	Xinghua Primary School at Hougang Ave.2	0.7mm PVDF aluminium double lock seam	6000 m ²	PWD
8	Opera Estate Primary School@Fidelio Street	0.7mm PVDF aluminium double lock seam	6500 m ²	PWD
9	New Water Factory	0.5mm Stainless steel double lock seam system	10000 m ²	GTW
10	Phillips Ave (Bungalow)	ROOFING—ALUMINIUM 0.7mm,	2500 m ²	PWD
11	CADANGAN PEMBANGUNAN	1.0mm PVDF aluminium double lock seam	31295 m ²	PUTRAJAS A
12	JURONG ISLAND SAMSUNG ELECTRIC POWER STATION (Singapore)	0.8mm stainless steel Trapezoidal Corrugated steel façade system.	20000 m ²	SAMSUNG
13	TAMPINES NEW FIRE STATION	ROOFING,BULLNOSE,CURTAIN WALL	3500 m ²	GTMS
14	SENTOSA ISLAND, PALAWAN BEACH STATION AND DEPOT	ROOFING,CLADDING—TITANIUM-ZINC	4500 m ²	SG-BOGEN PTE.LTD.
15	BOTANIC MRT STATION	ENTRANCE ROOFS / LINKWAYS		TAISEI LTA
16	CALDECOTT MRT STATION	ENTRANCE ROOFS / LINKWAYS		
17	FARRER MRT STATION	ENTRANCE ROOFS / LINKWAYS		
18	BUNGALOW,MIN TECK PARK 111	MAIN ROOF / CEILING		PRAXIS
19	BUNGALOW,LA SALLE STREET 49	MAIN ROOF / CEILING		SEAH GIM WAH
20				
21				

联系方式

Contact

上海 • 中国总部

上海矩迪建筑装饰工程有限公司

厂址: 上海市松江区九亭镇久富开发区盛龙路 755 号温龙园区 7 幢

Add: Bldg. No.7, 755 Shenglong Rd., Wen'long Industrial Park, Jiuting, Shanghai, PRC.

Tel (电话): +86 21 5102 8219 Fax (传真): +86 21 5106 2991

Email: service@gtbuildings.com 网站(Web): www.gtbuildings.com

新加坡 • 亚洲总部

GT-Roofing PTE Ltd. (Co. No.200506234E), Asian Headquarters

21, Cuscaden Road, #05-12, Ming Arcade, Singapore 249720

Tel: +65 9688 4190 Fax: +65 6737 2412

Web: www.gtmetalroof.com , Email: dietmar@gtmetalroof.com